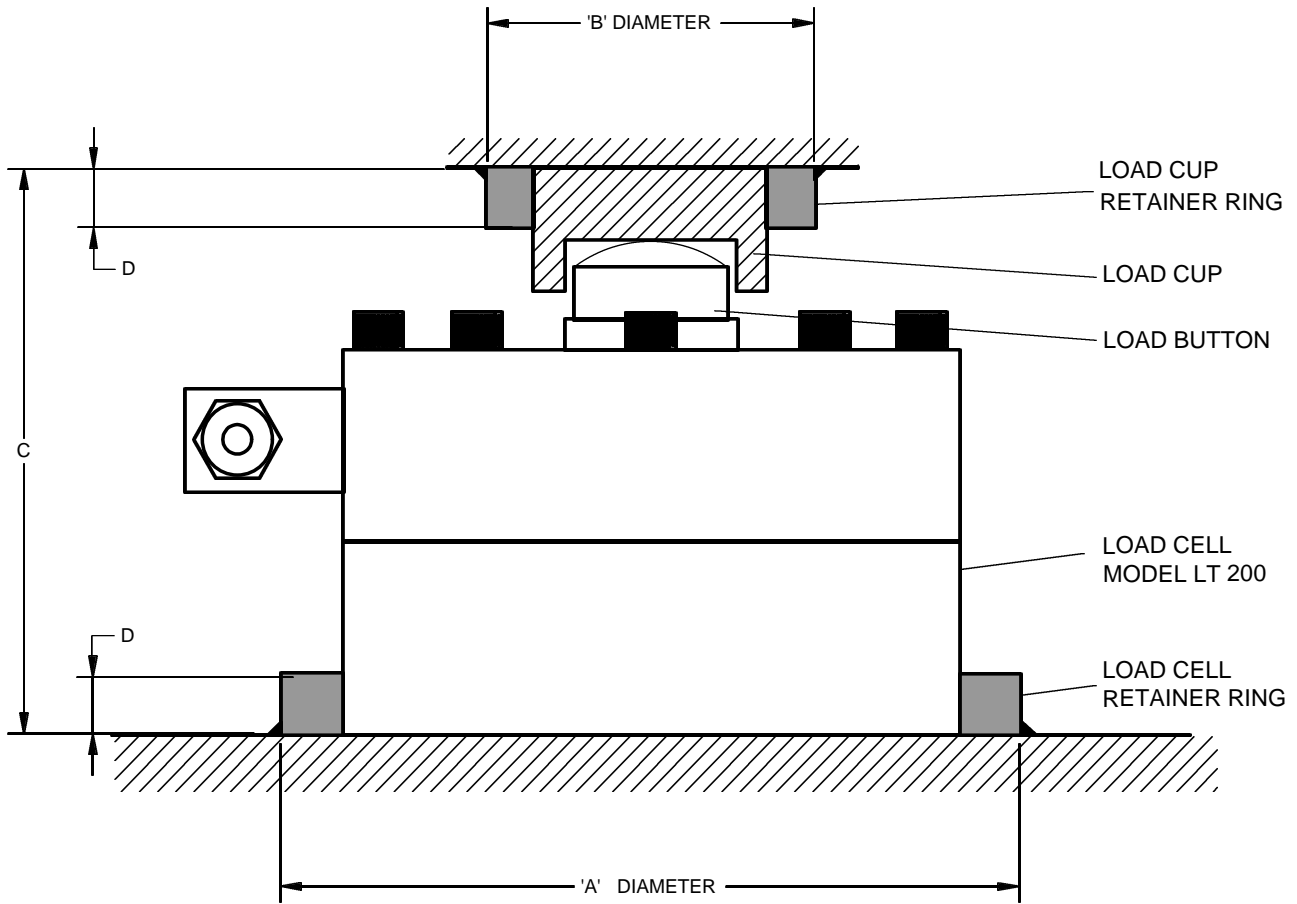


LT2005 LOAD BUTTON AND CUP ASSEMBLY



DIMENSIONS

CAPACITY	1/2 TON	5 TON	10/20 TON	50 TON	100 TON	200 TON
A	118	135	170	216	308	380
B	62	62	78	105	155	180
C	95	110	139	194	269	277
D	12	12	14	14	20	20

MANUFACTURED BY :

LOADTECH (PTY) LTD
 134 Sarel Baard Crescent
 Gateway Industrial Park
 Centurion Gauteng
 P.O. Box 9947
 Centurion 0046
 Tel : 012-661-0830
 Fax : 012-661-0816

LOADTECH
LOAD CELLS
 FOR QUALITY