

LT200

LOADTECH
LOAD CELLS



Model LT 200 heavy duty, universal low profile load cell.

Capacities 1 000 to 200 000kg

Epoxy coated tool steel

Hermetically sealed to IP 68

Excellent side load resistance

Tension or Compression

Built-in overload stop in compression

Cost effective solution for industrial
weighing systems

Model LT 200 load cells
manufactured from high
grade steel and are epoxy
coated for protection.

The low profile shear web design
makes it extremely robust and it has
excellent resistance to side and
torsion loads

Hermetically sealed to meet IP 68
ensures long operation life in
adverse conditions.

Industrial applications
include cranes, scale cars,
large platform scales,
hoppers, tanks, silos and batching
systems.

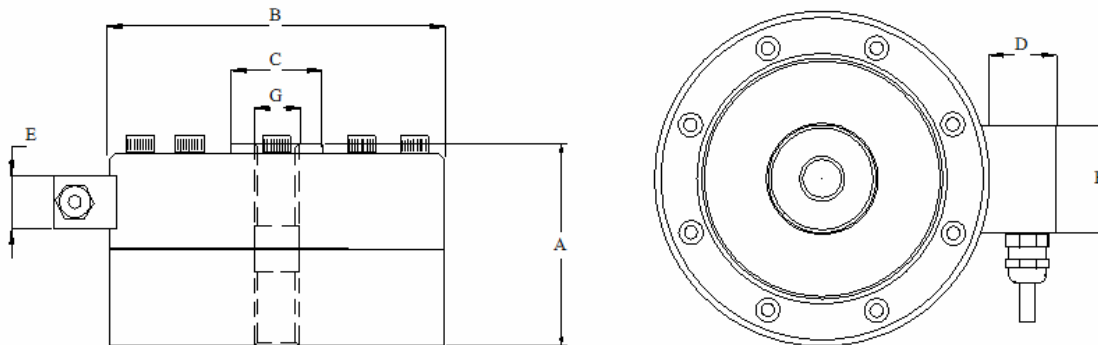
Manufactured by :

LOADTECH LOAD CELLS (PTY) LTD
134 Sarel Baard Crescent
Gateway Industrial Park
Centurion, Gauteng
P.O. Box 9947, Centurion 0046

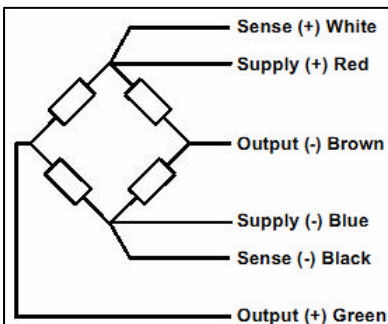
Tel : 012 661 0830
Fax : 012 661 0816
E-mail : sales@loadtech.co.za

LT200 SPECIFICATIONS

ACCURACY CLASS	0.1%	0.05%	0.03%	UNITS
Rated capacities	1,2,5,10,20,50,100 and 200			ton
Rated output	2.0 + / - 0.1%			mV/V
Total error	0.1	0.05	0.03	+ - % of Applied load
Creep at rated capacity: Zero return	0.1	0.05	0.03	+ - % of Applied load
Zero Balance	0.5	0.5	0.5	+ - % of Rated Output
Temperature Range : Operating : Compensated	-30C to + 80 0C to + 40			C
Temperature Effect : On Output	0.007	0.004	0.003	+ - % of Applied Load/C
: On Zero	0.015	0.007	0.003	+ - % of Rated Output/C
Safe Overload	150			+ - % of Rated Capacity
Ultimate Overload	300			+ - % of Rated Capacity
Excitation : Recommended	10			Volts AC or Dc
: Maximum	15			Volts AC or Dc
Input Impedance	350 + / - 3			Ohms
Output Impedance	350 + / - 3			Ohms
Insulation Resistance	>1000			Mega ohms
Deflection at rated capacity	< 0.4			mm
Weight 1000, 2000 kg	4			kg
5000 kg	6			kg
10 000, 20 000 kg	11			kg
50 000 kg	25			kg
100 000 kg	80			kg
200 000 kg	+ -140			kg
Construction material	Tool Steel - Painted			
Environmental protection	IP68			
Cable	5 meter 6 wire screened			



CAPACITY	A	B	C	D	E	F	G
1/2 t	70	105	28	30	25	50	M14 x 2
5 t	80	120	33	30	25	50	M20 x 1.5
10/20 t	90	155	60.5	30	25	50	M32 x 2
50 t	120	200	75	30	25	50	M45 x 3
100 t	180	278	120	30	25	50	M70 x 3
200 t	180	350	190	30	25	50	M80 x 3



Note : Connections shown for tension.

MANUFACTURED BY BY :

134 Sarel Baard Crescent
Gateway Industrial Park
Centurion Gauteng
P.O. Box 9947
Centurion 0046
Tel : 012 661 0830
Fax : 012 661 0816
E-mail : sales@loadtech.co.za

LOADTECH

LOAD CELLS

FOR QUALITY

Note: These specifications are Subject to change without notice.